



Hydraulic Systems

BULL

Hydraulic planetary Gear
Recovery Winch

User and maintenance guide



bezares.com

+34 91 818 82 97

bezares@bezares.com

INDEX

1. GENERAL

1.1	Introduction.....	4
1.2	General safety recommendations	4
1.3	Main characteristics	5
1.4	Marking	5

2. INSTALLATION

2.1	Dimensions	6
2.2	Assembly on the vehicle	7
2.3	Hydraulic circuit	8
2.4	Roller guide installation	8
2.5	Cable tensioner installation	9
2.6	Cable installation	11
2.7	Pneumatic clutch	12

3. USE AND MANEUVERING

3.1	Technical characteristics	13
3.2	Practice	14
3.3	Free drum rotation	14
3.4	Reeling in the cable	15
3.5	Unrolling the cable under load	16

4. MAINTENANCE

4.1	Regular maintenance of the winch	16
4.2	Spare parts list	19
4.3	Cable inspection	20
4.4	Troubleshooting	21
4.5	Declaration of conformity	22

5. WARRANTY

5.1	Warranty Information	23
5.2	Returns	23
5.3	Liability	23

1. GENERAL

1.1 Introduction

IMPORTANT: Read this manual carefully and make sure you fully understand it before installing and using the winch. The following signs are used in this manual according to the type of risk the operator faces:

DANGER

Warns about dangerous situations. If they cannot be avoided, they may cause death to the operator and the exposed people.

WARNING

Warns about dangerous situations. If they cannot be avoided, they may cause serious injuries to the operator and exposed people, and may also affect the winch's operation.

CAUTION

Warns about incorrect practices in the installation and use of the winch that may result in minor injuries to the operator and exposed people, and a damaged winch.

NOTE:

Notes give suggestions to the operator to make the use and maintenance easier, and extend the life of the winch.

If you have any doubt about its use or the correct operation, please contact our closest distributor or our after-sales service:

Bezares S.A

Poligono Industrial Monte Boyal
Av. de las Retamas. Parcela: 145-150
45950 Casarrubios del Monte (Toledo)
Telf: +34 902 333 331 • Fax: +91 818 82 84
bezares@bezares.com • bezares.com

IMPORTANT:

The operator is solely responsible for safe installation and operation.

1.2 General safety recommendations

1. Do not use the winch to move people, lift loads, or maintain them in certain position.
2. An exposed (to the danger) person is anybody who is within the danger area, which is within a radius equal to one and a half times the length of the unrolled cable.
3. Do not exceed the capabilities of the winch and the cable.
4. Always wear protective gloves during regular use of the winch.
5. The identification plate and the warning and use labels should always be visible.
6. This instruction manual should always be included with the winch, thus, it shall always be available for consultation by the operator.
7. Do not move the recovery vehicle while the cable is under tension; the force of the winch plus the force from the vehicle might overload the cable, either breaking it or causing permanent deformation.
8. Do not apply sudden loads on the winch cable.

9. Set the parking brake and wedge all the wheels of the recovery vehicle when using the winch.
10. On platforms and tows, fasten the load with other means in addition to the winch cable.
11. Do not use the winch while under the influence of alcohol, drugs, or medication.
12. Do not weld or machine any of the winch parts.
13. Install texts on the visible areas of the recovery vehicles, warning about the danger involved in the using the winch without having fully read and understood this instruction manual.
14. Install emergency stops for the hydraulic circuit in areas accessible to the operator while using the winch, and next to potentially hazardous areas, such as the drum.

1.3 Main characteristics

Rotating direction: bidirectional.

Hydraulic motor: 160 cc / 200 cc (check table)

Double overcenter valve: It regulates the load descending speed, locks the motor in case the connection hoses breaks, and releases the drum if a sudden force is applied to the cable, protecting the internal components of the winch.

Mechanical brake: Made of sintered bronze plates. 100% load-retaining capacity. It guarantees the load position in case of hydraulic failure, or internal leaks in the motor and overcenter valve.

Reducer system: Made up of planetary gears, with a total reduction of 5:1.

Maximum cable rolling capacity, and cable diameter: 25m x Ø10mm / Ø12 mm x 20 m

Drum: 7mm thickness Steel tube with an established diameter of 63mm (2 1/2")

Clutch: Manual or pneumatic, it releases the drum to let you manually unroll the cable.

	Bull E40	Bull S40 PickUp
Motor (cc)	160	125

*Not available for the S40 version

1.4 Marking

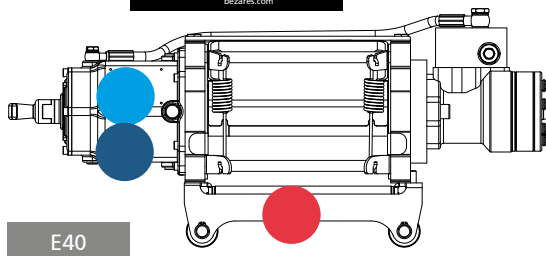
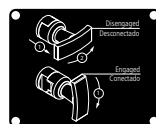
SAFETY NOTICE



IDENTIFICATION PLATE



CLUTCH INSTRUCTIONS

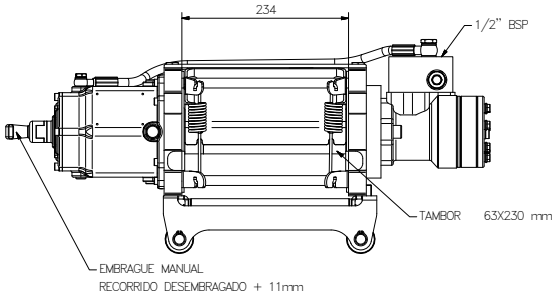
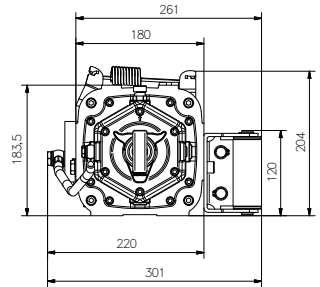
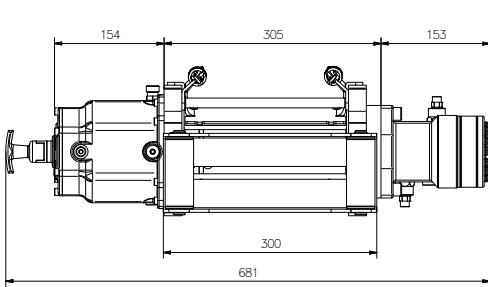


E40

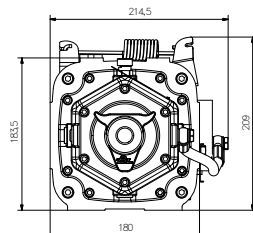
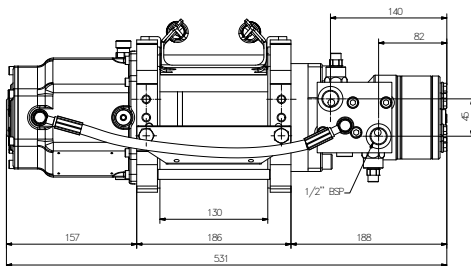
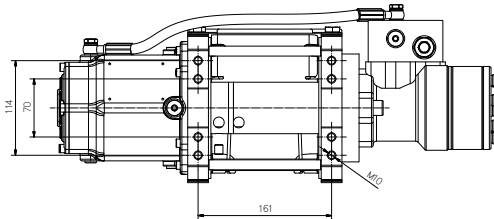
2. INSTALLATION

2.1 Dimensions

E40



S40 PickUp



2.2 Assembly on the vehicle

These instructions should be respected in order to avoid winch misalignment under load, which might block the internal components (planetary gears, clutch, mechanical brake), cause excessive bearing wear, and breaking of fastening screws.

Use the following template for drilling in order to fasten the winch to the vehicle chassis:

The surface on which the winch is bolted should be made of steel, with a thickness no less than 7 mm, and with a flatness equal to or less than 0.4 mm. In order to fasten the winch to this surface, eight M10 screws, with a minimum quality of ISO 10.8, should be used. They should be inserted 20 mm into the aluminium winch supports. The screws should be self-locking through impregnation, or DIN 6798-type serrated washers. If the winch is mounted on a base plate with the holes drilled according to the template indicated below, it should be screwed to the chassis with the same number and quality of screws.

Mounting bolts template

E40 / S40

E40 - <https://bezares.com/templates/E40.pdf>
E40 PickUp - <https://bezares.com/templates/E35.pdf>

	A
E40	259,3
S40 Pick Up	161



2.3 Hydraulic circuit

WARNING

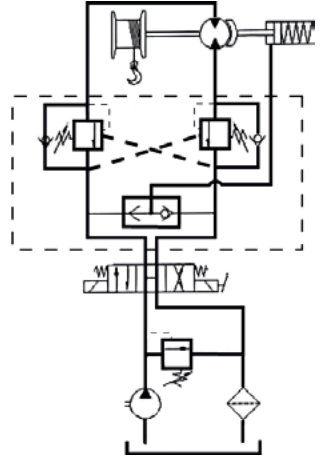
The maximal flow and pressure should not exceed the values shown in the next hydraulic model:

Filters on the pump suction line are not recommended. The filter on the return line should have a filtering capacity between 10 µm and 25 µm. Use hydraulic oil with anti-wear and anti-foam additives, according to the standard DIN 51524 / 51525 (type HLP).

In general the following viscosities are recommended, based on the room temperature:

- 22 cSt for cold temperatures
- 37 cSt for mild temperatures
- 46 cSt for warm temperatures

The oil temperature should not be lower than -15° C or higher than 80° C.



PRESION MAX.		CAUDAL MAX.	
E40	S40 PickUp	E40	S40 PickUp
165 bar	180 bar	50 l/min (continuous)	60 l/min (continuous)

NOTE:

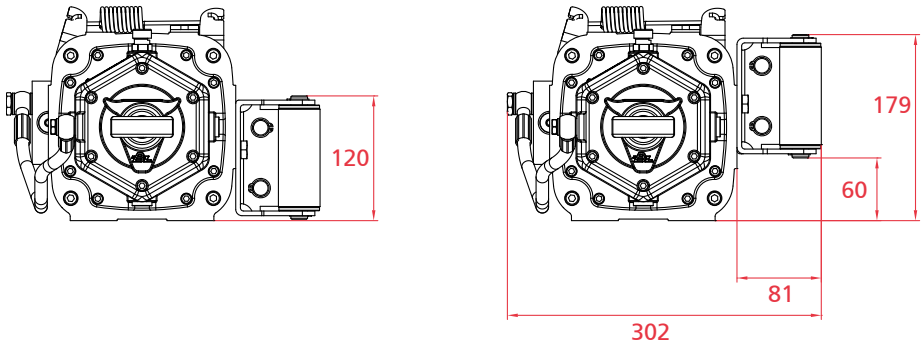
Before rolling the cable and using the winch for the first time, it should be operating without a load for enough time so that all of the oil in the hydraulic circuit has gone through the return filter at least once. It is recommended to operate the winch without a load for 10 minutes to eliminate all the air from the circuit, and to prevent the formation of foam in the tank.

2.4 Roller guide installation *Not available for the S40 version

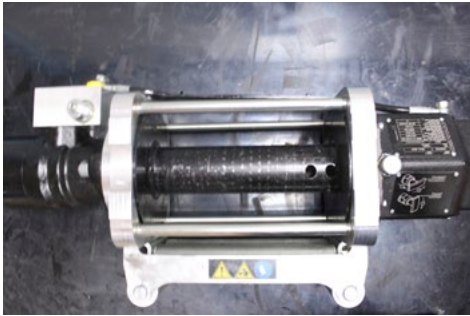
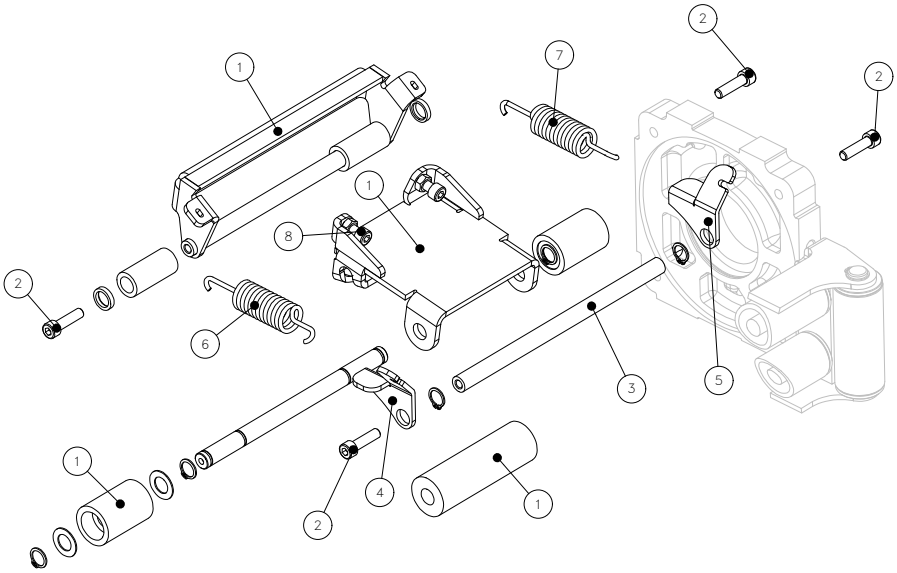
The roller guide can be assembled in two different positions, depending on where the drum will collect the cable.

The lower position of the guide collects the cable under the drum. Recommended.

The upper position of the guide collects the cable on top of the drum.

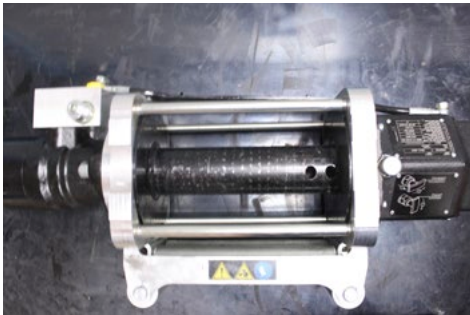


2.5 Cable tensioner installation



If the winch is not installed on the crane, be sure to install on a flat surface. Read the instructions in their entirety before proceeding with the installation of the cable gland.

1 Installation must be done before placing the cable on the drum. Therefore, if you already have the cable coiled, you will need to unroll it first and release the end of the fixing hole to facilitate the assembly of the springs.



2 Remove the two upper spreader bars:

a) Loosen an M12 Din 912 screw on one side of the roller guide, if fitted. To do this, you must remove one of the side rollers, removing one of the Din 471 rings and removing the roller that will be free.

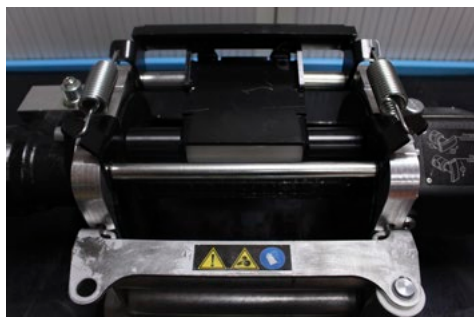
b) Unscrew the four Din 912 M10 screws (2) on the sides

of the winch brackets, corresponding to the upper bars.



3 Install the plate and roller assembly:

- a) Position the assembly (1) between the supports, in the appropriate position. It should be placed on the opposite side of the roller guide when it is mounted in the lower position. For a top mounting of the guide, the cable gland assembly will be placed on the side closest to the roller guide.
- b) Secure the position using the Din 912 M10 x50 screws (2), but do not tighten them yet.



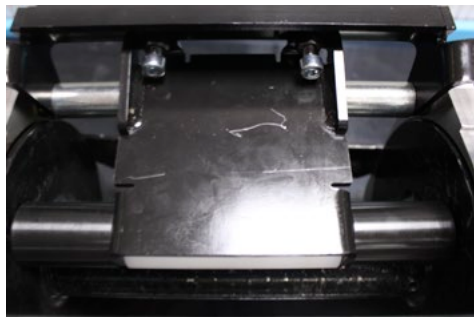
4 Fit the tensioner assembly:

- a) Position the tensioners (4) (5) at the ends of the rod (3). The spring clamping area must be in an open position with respect to that of the winch supports (see figure).
- b) Position the tensioner assembly between the winch brackets without bringing it into position with respect to the bracket holes.
- c) Insert the springs (6) (7) in the tensioning plate of the assembly, inserting the hook through the upper part of it. Make sure to place the coiled area of the spring in the position furthest from the plate.
- d) Insert the other end of the springs into each of the tensioners. Make sure to place the rotated spring hook in the open position relative to the brackets (see figure).



5 Position the tensioner assembly:

- a) Once the springs are in place, position the tensioner assembly, using the rod (3), in the holes of the supports. Fix this position using the Din 912 M10 screws (2).
- b) Tighten the four screws once they are in position.
- c) Once the screws of the rods have been tightened, reassemble the side roller removed in step 2.



6 Adjust the tension of the cable gland (optional):

Adjust the tension of the cable gland using the screws (8) located on the center plate of the plate and roller assembly. Once the desired tension is reached, fix it using the nuts located on the screws (8). If you do not know what final tension you want, keep the screws in the supplied state (recommended).

2.6 Cable installation

Use a cable with the following characteristics: Galvanized 6x19+1 construction, according to DIN 3060 and DIN 3066 standards respectively, or its ISO 2408 equivalent.

Minimum / Recommended resistance of the cable section: 180 Kg/mm².

Model	E40	S40 PICKUP
Ø min (mm) Recommended		10
Minimum effective breaking load (kg)		7000
m. CABLE (max.)	25	15

The minimum effective breaking strength is for a new cable. Applying the UNE-EN 14492-1 regulation, the minimum cable-breaking load should double the maximum traction capacity of the winch.

Insert the cable through the two holes, leaving two rolled turns, and screw in the DIN 913 M10x8 set screw as shown in the drawing, making sure that the cable end does not exceed the hole where the set screw is screwed.

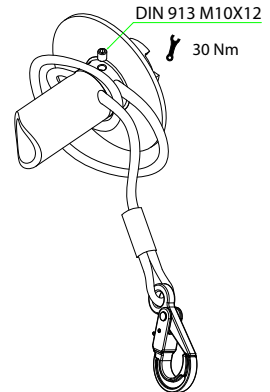
⚠ CAUTION

Wear thick leather gloves to install the cable and never let the cable run through your hands, even with the gloves on. Ensure that the clutch is in the disengaged position and that the drum can be rotated manually.

NOTE: Completely unroll the cable on the floor, making sure that it does not fold on itself; this will facilitate rolling the cable on the drum.

⚠ WARNING

When rolling the cable for the first time, apply a minimum load of 50 kg to the cable to prevent trapping of the external turns on the internal ones, which would cause deformation and knots in the cable when working with a heavy load. Roll the cable in an ordered way.



⚠ CAUTION

If the cable was already rolled at the factory, it must be rolled again in the previous conditions.

! DANGER

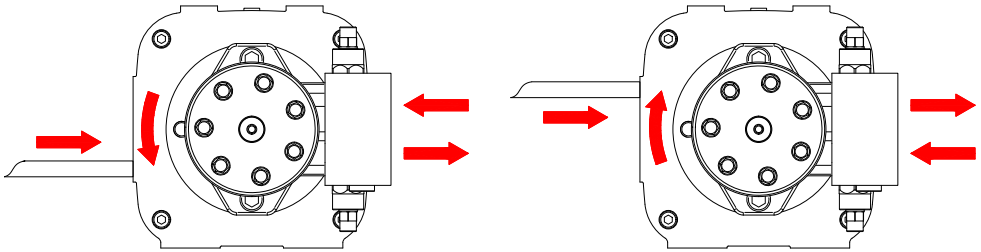
The set screw does not retain the cable under load by itself. Leave at least 5 turns of rolled cable on the drum to operate safely.

NOTE: It is recommended to paint the last two meters of cable in red or yellow, on the opposite end to the hook; this will warn you that the cable is on the last layer and that there are approximately 8 rounds left, 3 to reach the hazardous area.

The drum has been designed so that the cable does not completely unroll due to the operator error, leaving two rolled turns. These two remaining turns may prevent the cable from coming free under load, but they do not resist the maximum force that the winch is designed for. If overlooked, the cable would be rolled in the opposite direction, and it might be seriously damaged.

Follow the hydraulic connection instructions on the overcenter valve, shown in the following figure, in order to obtain the desired rotating direction based on where the drum will collect the cable.

E40 / S40



2.7 Pneumatic clutch installation

The pneumatic version of the clutch consists of a simple effect pneumatic cylinder. The air pressure for actuation should be between 6 and 8 bar. The body has a machined 1/8 BSP thread and the supplied quick connector is for 6x4 tube.

At the back part there is the piston vent and a switch (opened) that closes the circuit when the clutch shaft is not at its rest position, that is, it has not entered completely or that the pneumatic valve is at the disengaged position.

This switch should be used to close a circuit supplying a visual or acoustic signal; it can also be combined with the remote command to cancel the lifting function until the clutch is completely engaged.

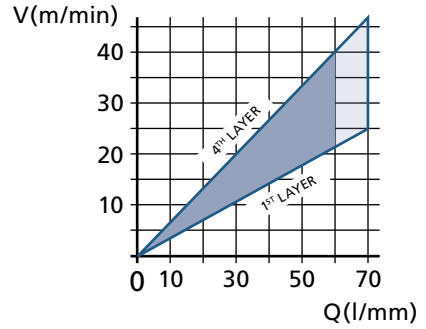
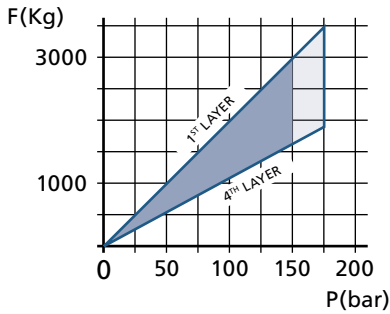
3. USE AND MANEUVERING

3.1 Technical characteristics

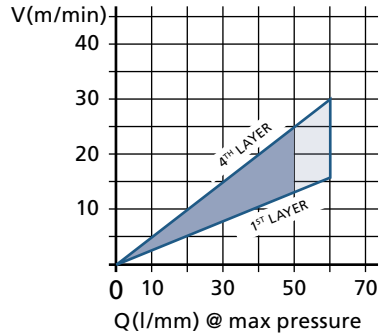
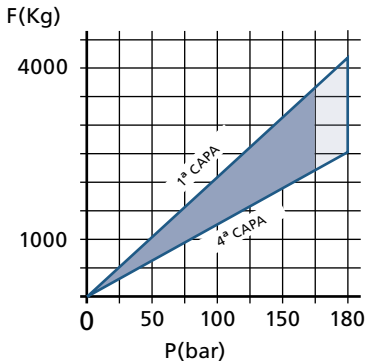
Pulling capacity and maximum pressure

Collection speed and maximum flow

S40 PICKUP (125 cc)



E40 (160 cc)



 Continuous
 intermittent

3.2 Practice

The best way to prevent accidents and extend the life of all the winch components is to practice before using it. There are two parameters the operator can easily control while handling the winch: the collecting speed and the sound of the winch and the valves.

Get used to differentiating the cable speed depending on the layers rolled on the drum. The internal layers collect the cable at a slower speed. The cable speed should be practically the same working with or without load.

Get used to the sound of the winch itself (planetary gears) and of the hydraulic block (hydraulic distributor and pressure relief valve in the circuit).

Differentiate between working without a load and with light load, a very heavy load and a load exceeding the winch dragging capacity, which causes the cable to stop, even if the hydraulic distributor is activated. Use a pulley in this last case.

3.3 Free drum rotation

WARNING

Never perform this operation with the cable loaded.

This operation is necessary when the cable has to be manually and quickly unrolled without starting up the hydraulic circuit, as well as for maintenance tasks and installation of accessories.

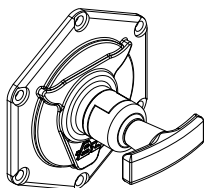
DANGER

Leave at least 5 turns rolled on the drum to operate safely.

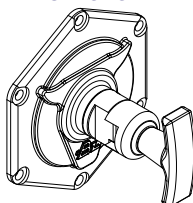
3.3.1 Manual Clutch (Not available in Pick Up models)

E40

ENGAGED



DISENGAGED



Pull the manual clutch handle until it turns 90°. You will notice the resistance of the internal return spring. The clutch travel distance is approximately 11 mm. Release the rotated handle; it will stay in the “disengaged” position and the drum may rotate freely by hand, although with some resistance. Unrolling the cable may be done easily by pulling the hook by hand.

Rotate the handle 90° again in order to engage the clutch.

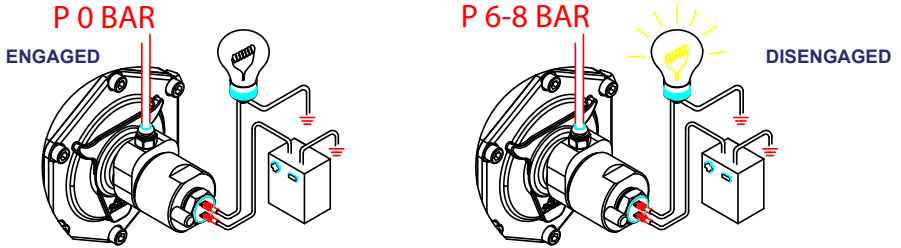
If the handle does not go into place, you have two options:

- Pull the cable to rotate the drum.
- Operate the winch to retract the cable while holding it. Until the clutch returns to its position the drum will not start to rotate.

3.3.2 Pneumatic clutch (E40)

Activate the pneumatic valve that commands the clutch; the acoustic / luminous warning described in section 2.7 will emit a signal.

Unrolling the cable may be done easily by manually pulling the hook. In order to re-engage the clutch, locate the pneumatic valve in the engaged position; the acoustic / visual alarm will stop its signal when the shaft is in the engaged position. If it does not return to this position, you may use the method described previously in the manual clutch section.



3.4 Reeling in the cable

DANGER

Never perform this operation if there are less than five turns of rolled cable on the drum.

WARNING

Do not roll the cable when it is loaded if the clutch is not fully engaged.

Activate the hydraulic distributor to the cable reel-in position.

Before moving the load, gently tighten the cable with slow and short movements in order to prevent sudden pulls that may exceed the maximum force of the winch for an instant in time.

Remember that the force needed to start moving a load is greater than to keep it moving.

Avoid short movements with constant stops with the cable under load.

If the load to be moved is very heavy, use the last layer to start moving it; this will generate more force, and prevent the upper layers from getting into the lower ones, ending up deformed (knots).

If the drum stops because the load exceeds the force developed by the winch, use a pulley (on the load) and connect the hook on a part of the chassis that is separate from the one used to assemble the winch.

Using a pulley doubles the pull force.

Avoid lateral pulling angles greater than 20°; use a pulley in these cases. If the length of the unrolled cable is more than 10 m, place a blanket, jacket, or something similar at approximately 2 m from the hook; this will partly prevent the cable from whipping in case of being released from the hook.



WARNING

Uneven rolling of the cable on the drum is not a big problem. Avoid rolling at one side of the drum; it might cause serious damage to the cable and the winch, which may ruin both of them. In this case you should:

- Fasten the load, with the cable being under load.
- Release a little bit of cable.
- Check that the load does not move and release the hook. Unroll all the cable that was rolled unevenly on the drum.
- Roll it again in an orderly manner, following the instructions previously described for the cable installation.

Never try to guide the cable onto the drum with your hands when it is under tension.

Check the planetary gear housing temperature. You should be able to bear the temperature when touching the housing with your hand; if not, let it cool.

In order to stop the winch, place the hydraulic distributor in its center rest position.

3.5 Unrolling the cable under load

DANGER

Do not release the hook from the load until securing the load, and verifying that the cable is not under tension.

In order to unroll the cable under load, place the hydraulic distributor to the unrolling position. The overcenter valve controls the load descending speed. A slow and even descent is recommended instead of a fast one with constant stops; the load inertia may cause impact forces that are higher than the retaining forces developed by the winch.

4. MAINTENANCE

WARNING

Perform all the maintenance operations with the winch stopped, without pressure in the hydraulic circuit and without tension on the cable.

4.1 Regular maintenance of the winch

4.1.1 Annual

Check the braking capability of the mechanical brake:

- Unscrew the end of the fitting over the overcenter valve.
Be careful with the closing washer that seals the tube against the valve.
- Unscrew the bolts that fasten the hydraulic motor to the motor support.
- Remove the motor-overcenter valve assembly without moving the pilot fitting.
- Adjust the device Code 9030499 on the winch shaft, and apply a torque of 250 Nm; the shaft should not rotate. Otherwise, contact our after-sales service.

Change the oil lubricating the gears and the brake:

	E40	S40 PICKUP
Capacity in liters	0,3	0,24

Use oil to lubricate the gear reducers with EP additives and a viscosity index higher than 95, according to standard ISO 6743-6 KKC or DIN 51517 CLP. The viscosity grade will be chosen depending on the room temperature, according to the following table:

Room temperature	+ 5 °C	+ 30 °C	+ 60 °C
	- 20 °C	+ 5 °C	+ 30 °C
ISO VG	100	150	320

CAUTION

It is very important to follow all the steps in the following order.

- Unscrew the upper and lower plugs of the gear housing to empty the oil.
- Let all the oil drain completely.
- Screw in the lower plug again.
- Unscrew one of the lateral plugs to check the oil level when filling through the upper plug.
- Screw in the lateral plug and lastly the upper one.

The plugs should be tightened to a torque of 30 Nm.

4.1.2 Monthly

Lubricate the manual clutch with oil. Engage and disengage it several times to complete the lubrication. Check that all the winch screws are tightened, including the ones fastening it to the chassis. Check the level of oil by unscrewing one of the lateral screws on the gear housing. If necessary, refill; follow the previous instructions.

4.1.3 Daily

Check that there are no oil leaks. Cable lubrication is very important. When the cable operates, the internal wires move and rub against each other; the external wires wear out by rubbing against the pulleys and drums.

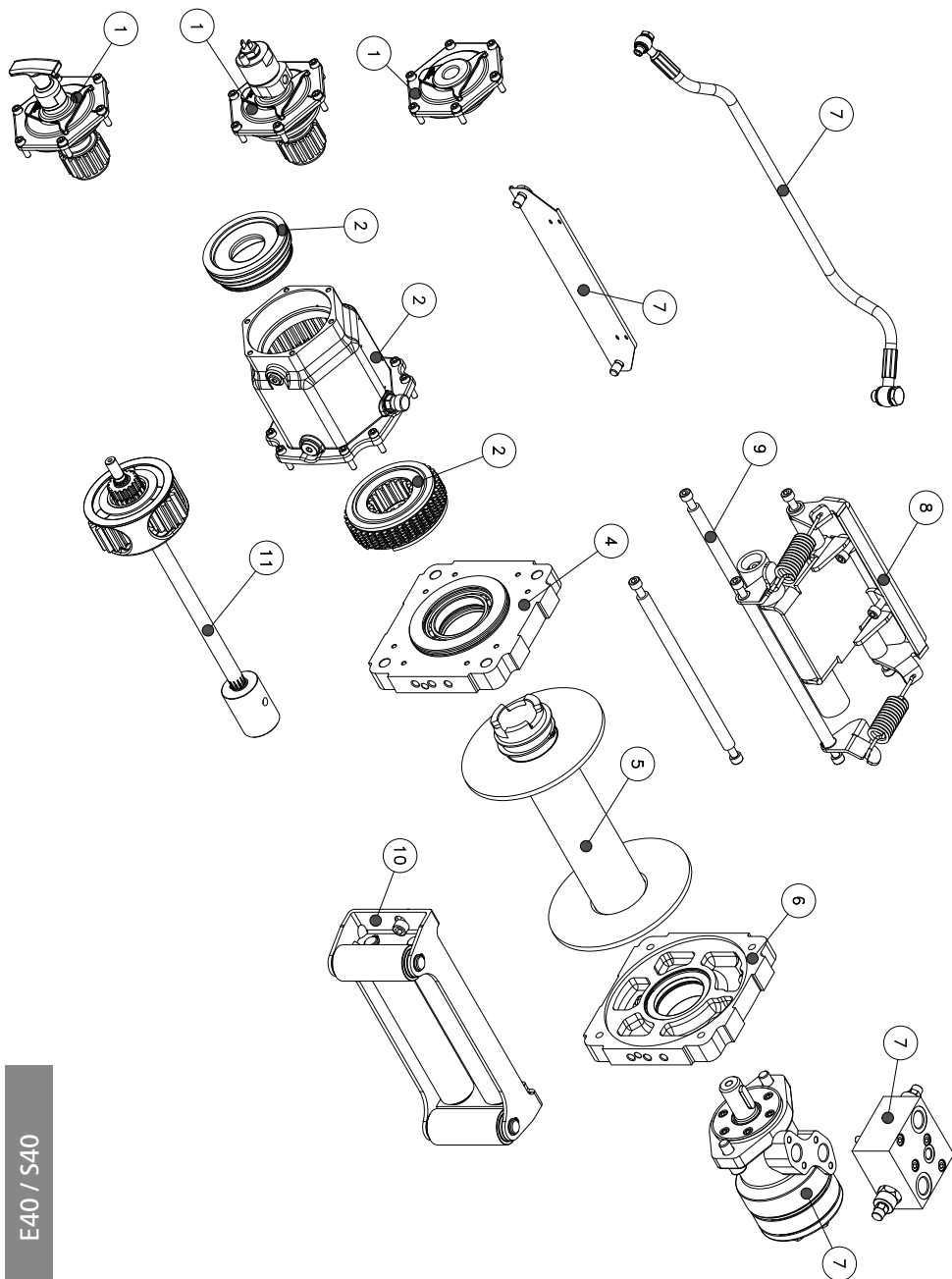
The lubricant reduces the wear, internally and externally; it also protects against corrosion. Lubricate the cable following the manufacturer's instructions (very viscous oil or very light grease with adhesive additives, such as molybdenum bisulfate is recommended) and check that it has been perfectly rolled, as indicated in section 2.6. Clean the outside of the winch. Do not use a water jet; it might damage the seals and watertight o-rings.

4.1.3 After each use

Verify the condition of the cable (see section 4.2) and the hook.
Roll the cable as indicated in section 2.6.

#	Description	Part Number	
		E40	S40
	Pulling clutch kit	9034825	
1	Pneumatic clutch kit	9030025	
	Kit without clutch		9036125
2	Brake kit	9031025	
3	Reducing kit	9031225	
4	Drum Kit	9033425	9035225
5	Motor support kit - Drum	9031425	
6	Hydraulic kit E40	9035425	9035325
7	E40 cable clamp kit	9038325	9042225
8	Kit varillas	9039725	9040725
9	Roller guide kit	9030425	
10	Shaft kit	9031525	9036025

4.2 Spare parts list



E40 / S40

4.3 Cable inspection

Examples of permanent deformations for which the cable must be replaced.



4.4 Troubleshooting

PROBLEM	ROOT CAUSE	SOLUTION
The drum does not rotate without load.	<ol style="list-style-type: none"> 1. Faulty brake. 2. Lack of brake pilot pressure. 3. Assembly on chassis defective. Poor alignment of the lateral winch supports. 4. Blocked or defective reducing planetary gears. 5. Clutch in disengaged position. 	<ol style="list-style-type: none"> 1. Replace brake 2. Replace overcenter valve. 3. Verify the assembly (flatness, dimensions between holes, etc.) on the vehicle, as shown in section 2.2 4. Clean or replace the affected gears. 5. Make sure the clutch is in the engaged position.
The drum does not rotate with load, but it does without one.	<ol style="list-style-type: none"> 1. Higher load than the one allowed by the winch. 2. Insufficient pressure in the hydraulic circuit. 3. Defective motor. 	<ol style="list-style-type: none"> 1. Verify that you are not exceeding the winch pulling specifications (section 3.1). 2. Use a pulley as indicated in section 3.3 Verify that the hydraulic circuit meets the specifications in section 2.3. 3. Replace the motor.
The winch rotates slowly.	<ol style="list-style-type: none"> 1. Insufficient pump flow 2. Worn hydraulic motor. 	<ol style="list-style-type: none"> 1. Verify that the hydraulic circuit meets the specifications in section 2.3. Verify that the tank oil level is correct. Verify that the pump is operating correctly. 2. Replace the hydraulic motor.
The cable cannot be unrolled freely with the clutch in the disengaged position.	<ol style="list-style-type: none"> 1. Defective clutch assembly. 2. Assembly on chassis defective. Poor alignment of the lateral winch supports 3. Blocked reducing planetary gears 4. Blocking or knotting in the rolled cable. 	<ol style="list-style-type: none"> 1. Disassemble the clutch assembly and verify that the rod does not project out in its movement more than 11 mm. 2. Verify the assembly (flatness, dimensions between holes, etc.) on the vehicle, as shown in section 2.2. 3. Clean or replace the affected gears. 4. Apply soft pulls on the cable by hand or with the vehicle in order to untie the knots. Completely unroll the cable and verify its condition. If undamaged, roll it again following the instructions in section 2.6.
Oil leakage through the oil filler cap's evaporator (steel).	Defective brake.	Replace the brake.
Oil leakage through the oil filler cap's evaporator (steel).	Defective drum seals.	Replace the drum seals.
The load does not maintain its position.	<ol style="list-style-type: none"> 1. Defective brake. 2. Overcenter defective or with internal dirt. 	<ol style="list-style-type: none"> 1. Replace the brake. 2. Clean the cartridges and selector or replace the overcenter completely
Excessive noise.	<ol style="list-style-type: none"> 1. Assembly on chassis defective. Poor alignment of the lateral winch supports 2. Excessive rotating speed 3. Very low oil level in the tank. 	<ol style="list-style-type: none"> 1. Verify the assembly (flatness, dimensions between holes, etc.) on the vehicle, as shown in section 2.2. 2. Verify that the hydraulic circuit meets the specifications in section 2.3 3. Fill the tank to the appropriate level. Purge the air circuit following the instructions in section 2.3.
Vibration and excessive noise when rotating without load.	Overcenter defective or with internal dirt.	Install a pressure gauge at the pressure inlet on the overcenter valve (according to the activated function, up or down) and tighten the cartridge adjustment screw located on the return side of said valve until the pressure gauge reads between 44 and 48 bar. If the noise remains, please contact our after-sales service.

4.5 Declaration of conformity

CE CERTIFICATE OF CONFORMITY

The company Bezares S.A. located at Avenida de las Retamas, 145, Polígono Industrial Monte Boyal, Casarrubios del Monte, Toledo, España C.P: 45950, declares under it's sole responsibility that the machine:

Recovery Winch

Model

Options

Code

Serial N°

Production Year

1st layer max. pulling

4th layer max. pulling

1st layer max. speed

4th layer max. speed

Max. work pressure

Max. pump flow



Meets all the requirements of the Directive 2006/42/CE (DOUE L-157. 09-06-2006) on machinery.

Authorised person, established in the community, to make the technical documentation:

Alberto López Torrecilla. Bezares S.A.

For the record and the relevant purposes Emilio Nunez certifies this as head representative of Bezares SA Casarrubios del Monte, Toledo, Spain, dated January 1, 2010.

Bezares S.A.

+34 918 188 297 • bezares@bezares.com • bezares.com

Avenida de las Retamas 145, Polígono Industrial Monte Boyal, Casarrubios del Monte, 45950, Toledo, España

5. WARRANTY

5.1 Warranty information

All of our products are guaranteed against all manufacturing faults. The guarantee for use will be understood as for one year commencing from the date of the despatch of the goods, with the reservation that the guarantee will depend on the treatment that the goods had received and will only be valid with a necessary report from our Technical Service Department.

The manufacturer will not be liable to pay any compensation for loss of profits or losses brought about by product defects beyond that stated in this same point in regard to the guarantee.

5.2 Returnings

In order to make any return of goods we must be advised in advance. Our warehouses will not accept any despatch of returned goods that are sent "Carriage Due" and/or not authorised by BEZARES, S.A. Returns will not be accepted after 30 days from the date of the delivery note.

1. All returned materials will be inspected by the materials reception department to decide on their state.
2. The material must be completely new, without having been used and that is currently on sale, this being that it is not obsolete.
3. It is absolutely necessary that any return is previously informed, and authorized by Bezares's After-sales Department. Each package has to include inside, complete documentation explaining the reasons of the return, and the sticker outside, showing us "RETURN". The forms and the stickers are included inside the packing of all Bezares products.
4. Consult refunds policies with our customer service department.

5.2 Liability

Bezares, S.A. will not be held liable under any circumstances for their use or the defective assembly of its products, for breakdowns caused by external agents, excessive loads, inadequate lubrication, defects that may appear in the fitting of gear boxes to used vehicles, or for any other cause or accident outside of its control.

WARRANTY REPAIR CENTERS

España

BEZARES S.A

Polígono Industrial Monte Boyal. Avda. de las Retamas. Parcela: 145-150
45950 Casarrubios del Monte (Toledo)

Tel:+34 91 818 82 97 • Fax:+34 91 818 82 84

bezares.com • bezares@bezares.com

DELEGACIÓN CATALUÑA

C/. Mollet, 28
08120 La Llagosta (Barcelona)

Tel:+34 93 574 36 55 • Fax:+ 34 93 574 80 25

bezaresbarna@bezares.com



Francia

BEZARES FRANCE

106, Avenue des Roses. Zac de la Butte Gayen
94440 Santeny - France

Tel:+33 01 45 10 15 40 • Fax: +33 01 43 86 43 93

bezaresfrance@bezares.com

Italia

BEZARES ITALIA

Via Dell'Artigianato 4/B
31034 Cavaso del Tomba

Tel:+390 423 544 105 • Fax:+390 423 922 551

italia@bezares.com

EE.UU.

BEZARES USA

27634, Commerce Oaks Drive
Oak Ridge North, Texas 77385

Phone: +1 888 663 1786 • Fax: +1 888 819 6055

pto@bezares.com

China

BEZARES CHINA

No. 8. Hongfu East Road, Yaozhuang Town
Zhejiang Province • China

+86 573 84777638

china@bezares.com

México

BEZARES MÉXICO

4ª Avenida N°. 980 Colonia. Zimix
Santa Catarina, N.L. México 66358 - Monterrey

Phone: +52 81 1287 0090 Fax: +52 81 8059 3533

info@bezaresmexico.com

Bezares has an extensive network of distributors at your service worldwide.
Contact our Technical Support Department (34 902 333 331) to find out which one is nearest to you.